



## User Manual

Smart door magnetic sensor BP-WDOOR01-868



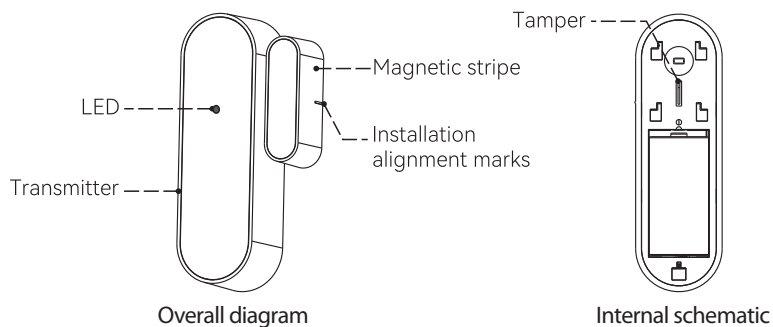
For Inquiries, Please contact:

Security Shop  
Vladimira Popovica 6/6/A606  
11070 Novi Beograd, Serbia  
Tell: +381 11 318 68 68  
office@securityshop.rs

Imported/Distributed by Security Shop doo  
license of Blaupunkt  
www.blaupunkt.com  
Made in China

*Enjoy it.*

### 1. Product brief



The intelligent door magnetic sensor belongs to a separate trigger type, and triggers an alarm by pulling the distance between the transmitter and the magnetic strip greater than or equal to 2 cm. The transmitter transmits an alarm signal to the gateway to prevent intruders attempting to sneak in from doors, windows, and other places.

Note: This product needs to be used together with the host machine.

### 2. Specifications

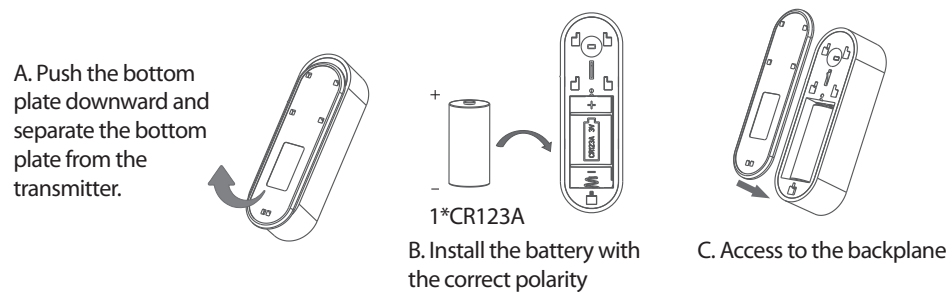
- Product model: BP-WDOOR01-868
- Modulation mode: FSK
- Wireless transmission distance: 120m (open land)
- Sensing distance: 2cm
- Operating frequency: 433/868MHz (optional)
- Working voltage: DC3V, using 1 CR123A lithium battery
- Working current: 35mA
- Standby current: < 10uA
- Working environment: temperature - 10 °C ~ 50 °C, humidity <90% RH, no condensation
- External dimension (L \* W \* H): transmitter 77 \* 24 \* 22mm
- Magnetic strip: 36 \* 11 \* 17.5mm

#### Lamp Description

Status	Light indication
Communication success	Green light flashes quickly once
Communication Failure	The red light is always on
Alarm prompt	The red light flashes once to indicate

### Battery replacement

The door sensor shipped without a battery installed. Please install the battery before use. Install steps:



### Network access settings

This product needs to be used with a host with the same modulation method as FSK. For APP operations, please add a host first. For detailed information, see the host machine manual. Please refer to the following operations for code matching methods.

Method 1:

- A. Place the transmitter parallel to the magnetic strip;
- B. Set the host or APP to the "automatic code checking" mode;
- C. Separate the transmitter from the magnetic strip at a distance of more than 2cm, or press the anti disassembly switch to send an alarm signal;
- D. The host/APP automatically learns the code matching after receiving the signal successfully.

Method 2:

Set the host or APP to the detector manual input mode, and then enter the 9-bit address code on the transmitter label.

### Installation

Please use strong double-sided adhesive or other strong adhesive to fix the transmitter and magnetic strip of the door magnet at the position where it needs to be installed.

Note: During installation, try to align the magnetic strip and transmitter with the fuselage " ⇐ ", and the maximum gap should not exceed 2cm.

